

St. Mary's Newsletter



October
2025

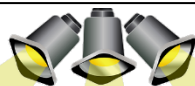
Tel:
01924 303625

Twitter:
@StMarysCofEPri1

Email:
office@stmaryswakefield.co.uk

We've had a very busy first half-term back in school. We've had trips, residentials, visitors in school, visits to Church for Harvest, trips to the cathedral, first-time experiences, class assemblies and lots lots more. The newsletter for October demonstrates some of the 'highlights' from each class's wonderful first half-term.

We hope you have a restful break and we look forward to welcoming you back to school on Monday 3rd November. **Please ensure you look at the dates for the next half-term at the end of the newsletter.**



In the Spotlight...

Highlights from each class

Reception had a lovely visit from 'Ian's mobile farm'. They really enjoyed seeing all the animals.



Reception



Nursery

This half term Nursery had a visit from Ian's Farm. The children thoroughly enjoyed learning all about the animal and getting to stroke their favourites. The children worked really hard to use a range of vocabulary to describe the different animals we saw.



Squirrel Lodge:

The children in squirrel lodge have enjoyed exploring the season of Autumn and taking part in the harvest festival.



Year 1:

Year 1 had a fantastic time when the mobile farm came to visit! The children loved meeting and learning about the animals up close. As part of their history learning, they also explored nursing in the past—discovering how nurses cared for patients long ago. The highlight was dressing up and role-playing as nurses, bringing history to life.



Year 2:

Year 2 had a visit from Catherine Conyard as part of their Great Fire of London history learning. Children handled artefacts and used their archaeological skills to piece together the past making links between then and now.



Year 3:

This half term, Year 3 have become archaeologists and used tools and a field journal to record their finding from the Stone Age. They played a maze game to help them understand how guides and instructions help us linking this to God and the Christian Bible. They had a prehistoric day at Murton Park and used base 10 to



Year 4:

Year 4 have been working on their unit of electricity. We have been looking at what makes a circuit work and what a complete and incomplete circuit looks like. We have explored conductors and insulators and explored what these look like within a circuit.



Year 5

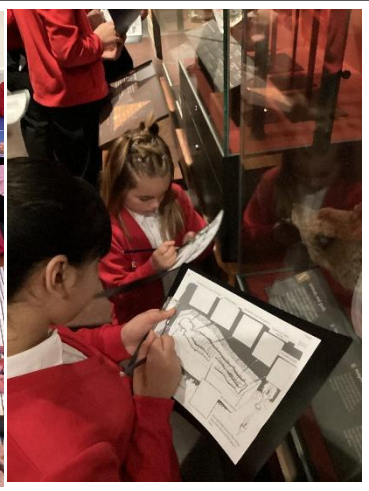
Year 5 visited Wakefield Cathedral as part of their learning in Religion and Worldviews. Children learnt about the layout and features of the cathedral building and how they help Christians to understand and worship God. Gillian was really impressed with the depth of thought and understanding shown by the children.



Year 6 (and also Y5 who went on residential)

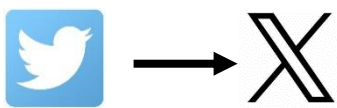
Year 6 have enjoyed learning about Ancient Egyptians and went on a trip to Leeds Museum to have a hands-on experience of mummification.

Year 5 and 6 went on their residential to PGL and loved it! They had a brilliant time and loved all the activities. They showed great team work and resilience.





Monday 3rd November- Back to school
 Tuesday 4th November- Parents Evening
 Wednesday 5th November- Parents Evening
 Monday 10th November- Y5 Ancient Greek Workshop
 Monday 10th November- Wear odd socks day for Anti-Bullying week
 Monday 10th- Friday 14th November- Anti Bullying week
 Tuesday 11th November- Y1 at Eureka Museum
 Thursday 13th November- Phonics parents for EY and Y1 parents
 Friday 14th November- School photographs (individual and siblings)
 Tuesday 2nd December- Pantomime
 Thursday 11th December- Christmas Disco (times TBC)
 Monday 15th December- Nativity to parents (AM and PM)
 Tuesday 16th December- Christmas dinner day in school
 Friday 19th December- School closes for 2 weeks Christmas holidays (at 1pm)
 Monday 5th January- Back to school



Twitter has changed its name to X. Make sure your browser/device is up to date to view all the wonderful things your children are doing at home.
 Please **follow us** on: <https://twitter.com/StMarysCofEPri1> to see a snapshot of what happens in school.
 Remember you can tweet any interesting photographs of children learning at home.

Please remember to visit our **School Website**, which has information about the School Day, the correct uniform, and Holiday Dates and Events <https://stmaryscephprimarywakefield.co.uk/>

There is a **translate button** on the homescreen which changes the coded text into the language chosen. Let us know if your language is missing.
 The website shows the latest photos from Twitter if you do not have an account.

Additional Notes

Attendance

Since returning to school, attendance is good. Most children are attending school when they can and are ensuring they are in classes to begin their day promptly.

Information

There have been a number of occasions recently when we have attempted to contact Parents/Carers and phone numbers have been incorrect. It is vital that all information is kept up to date. This include names, phone numbers and addresses. **Please check your information at the school office** as soon as possible.

Parent/Carer Support/Drop In

Miss Simpson would like to invite Parents/Carers to a Support Drop In session. Miss Simpson is happy to help fill out forms/applications and offer support and advice where necessary. These sessions are appointment only and will run on Tuesday and Thursday Mornings 9:30am-10:30am. Appointments can be booked on 01924 303625, email office@stmaryswakefield.co.uk or book in person.

Outstanding Payments/Parent Pay

Please can you ensure that you check your ParentPay Accounts for any information and outstanding payments including trips, visits, clubs and school dinner fees on <https://www.parentpay.com/>. If you are having issues with your account please contact the school office on 01924 303625, email office@stmaryswakefield.co.uk or in person.